


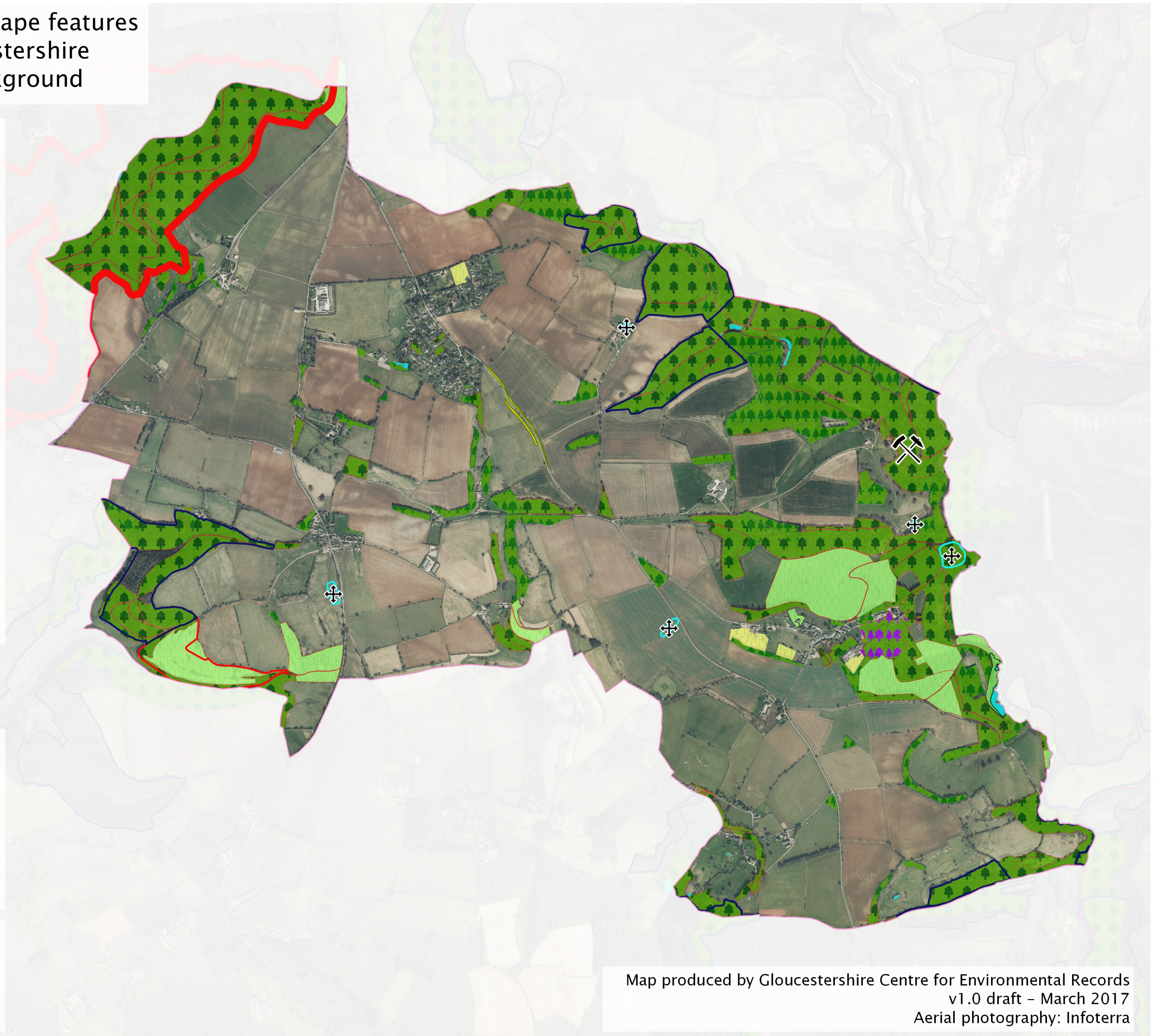
Important natural and landscape features Miserden Parish, Gloucestershire aerial photography background

Sites of Special Scientific Interest:

-  Cotswold Commons and Beechwoods
-  Rough Bank, Miserden
-  Key Wildlife Sites
-  Conservation Road Verge

Important habitat features:

-  Grassland
-  Amenity grassland
-  Open water
-  Woodland – semi-natural
-  Woodland – plantation
-  Scrub
-  Parkland
-  Churchyard
-  Scheduled Ancient Monument boundaries
-  Scheduled Ancient Monument
-  Regionally Important Geological Site



Priority Habitats are outlined in red; SSSIs are outlined boldly in red, and the woodlands at the north end of the parish, which are also National Nature Reserve and Special Area of Conservation, are heavily outlined. Note that some of the ponds and the older hedgerows may also be in a Priority Habitat category, depending on their stage of establishment and use. These are often too small to map but known to be locally important features.

Other designations:

The whole parish falls within the Cotswold Area of Outstanding Natural Beauty (AONB); Two Strategic Nature Areas to the west of the parish are also part of the Cotswold Scarp Nature Improvement Area (NIA).